

PRINTABLE INFO SHEET

Series: Pinecrest Elite Modular

Model: PGM5008-P



About This Model

Style: Ranch / Bedrooms: 3 / Bathrooms: 2 / Square Feet: 1360

CUSTOMER CONTACT

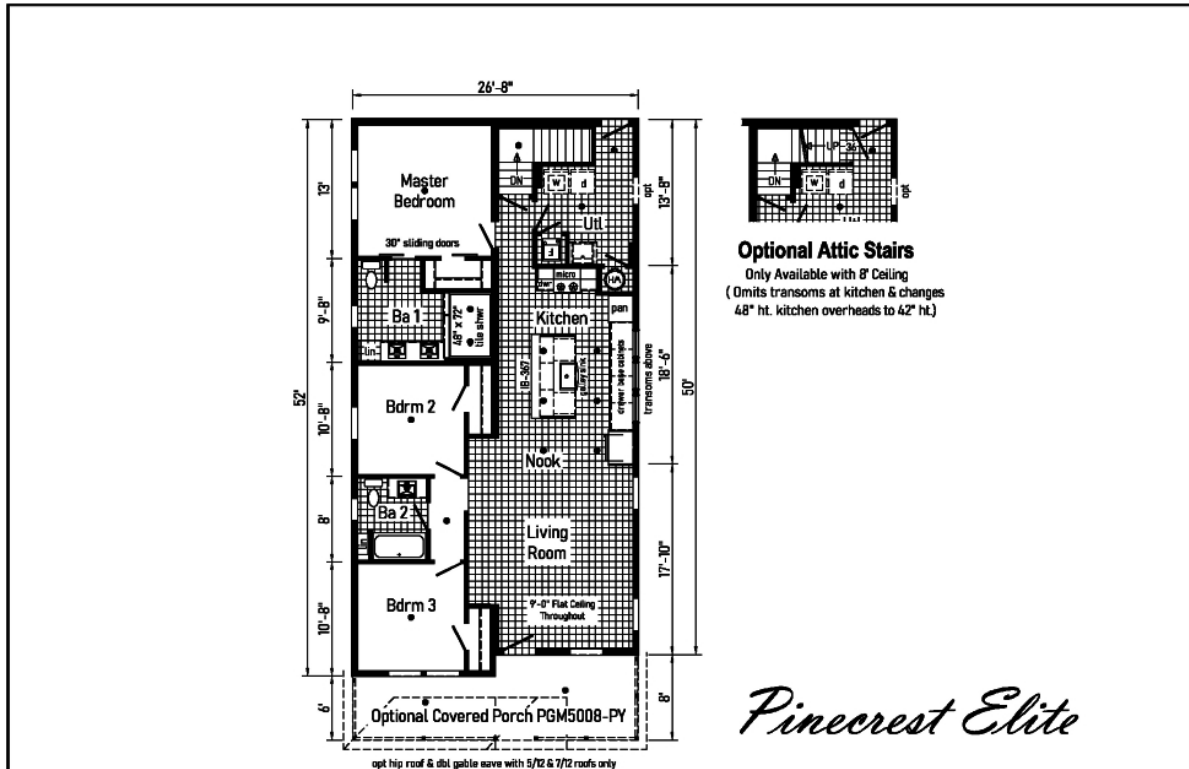
Notes:

PRINTABLE INFO SHEET

Series: Pinecrest Elite Modular
 Model: PGM5008-P



Floorplan



PGM5008-P 2850/52 Approx. 1360 Sq. Ft.

● - Std. can light

Builder: Commodore Homes of Pennsylvania	Callout: 2850/52	Revisions: 7/2/26	Scale: 3/32" = 1'-0"	Date: 4/17/26	Cust: -	Model/Eng No.: PGM5008-P
Title: Literature		Drawn By: DY	Reference: PGM5008-P		Dir: -	LIT
					S/N: ----	Pg.:

CUSTOMER CONTACT

Notes:

PRINTABLE INFO SHEET

Series: Pinecrest Elite Modular
Model: PGM5008-P



Standards & Features

Interior

Flat Coveless Ceiling Throughout
Smooth Ceiling
9' Sidewall Height
25 oz. Shaw Shake it Up Carpet
Rebond Carpet Pad
Tackstrip Carpet Installation
Shaw Vinyl Floor
Finished Drywall
LED Flush Mount Lighting
Pre-Hung White 2-Panel Interior
Doors with 2 Mortised Hinges
Sliding Barn Doors (per print)
Metal Interior Passage Sets
Floor Mount Door Stops
Smoke Detectors with Battery
Back-Up
Wire Shelving in Closets
Utility Sink
White Moulding Package

Kitchen

KCMA Certified Cabinetry
Hardwood Mission Cabinet Doors
with Hardwood Stiles
Concealed Cabinet Hinges
48" Door over Door Overhead Cabinets
with Cabinet Crown Moulding
Hardwood Under Cabinet Moulding
Lined Base & Overhead Cabinets
Soft Close Undermount Drawer Guides
Base and Center Shelves in Cabinets

Kitchen (continued)

Laminate Countertops w/ Crescent Edge
Apron Galley Sink w/ Brushed Nickel Metal Spring
Pull Out Faucet
Full Ceramic Backsplash on Range Wall
Single Row Ceramic Backsplash on
Window Wall
Refrigerator Surround

Appliances

Pearl Appliance Package:
25 CuFt French Door By Side Stainless Steel Refidgerator
with Water and Ice Maker
Self Clean Stainless Steel Free Standing Range
Tall Tub Stainless Steel Dishwasher
Stainless Steel Microwave above Range

Baths

48"x72" Ceramic Shower in Master Bath
1.6 Gallon Per Flush Elongated Toilets
Framed Mirrors at Master Bath
Square China Lav Sinks
Laminate Countertops with
Laminate Backsplash and Crescent Edge
Lighted Vent Fan in Each Bath
Hardwood Mission Cabinet Doors
Concealed Cabinet Hinges
Base Shelf in Vanities
36" High Vanities
Structured Flow Brushed Nickel Faucets

Bedrooms

Ceiling Lights (LED)
Egress Window Each Bedroom

CUSTOMER CONTACT

Notes:

PRINTABLE INFO SHEET

Series: Pinecrest Elite Modular
Model: PGM5008-P



Standards & Features (continued)

Bedrooms (continued)

Wire Shelving in Wardrobes
Recessed 6" LED Light
in All Walk-In Closets & Pantry

Utilities

Plumbed & Wired for Washer
with Quarter Turn Valve
Vented and Wired for Dryer
200 AMP Electrical Service
Copper Wiring Throughout
30 Gallon Electric Water Heater with Pan
Hi-Efficiency Gas Furnace w/ Grilled Door
Air Exchange System for Furnace
Insulated Heat Ducts
Perimeter Heat
Air Conditioner Thermostat w/ 5-Wires
Main Water Line Shut-Off Valve
Water Shut Offs - Where Accessible

Exterior

Gatsby Light at Front & Rear Door
(2) GFI-Protected Exterior Receptacle
Vinyl Dutch Lap Siding
OSB Sheathing
Wind Wrap
5/12 Architectural Shingle Roof with
10" Eaves on Ranch Homes
Ice Shield
Ridgevent Roof Ventilation System
6-Panel Fiberglass Front Door 38x80
6-Panel Fiberglass Rear Door 34x80
12" Raised Panel Shutters on

Exterior (continued)

Front Door Side
Exterior Faucet
68" Non Gridded Argon Windows Low-E

Construction

2x10 Floor Joists
2x6 Exterior Walls on 16" Centers**
2x4 Interior Walls
40# Roof Load
3/4" OSB T and G Floor Decking

Energy Efficient Standards

Vinyl Insulated Low-E Windows Argon
R-19 Fiberglass in Walls
R-31 Avg. Blown in Ceiling- Multi
10 Year Warranty

****NOTE: Spacing for Framing Members may vary due to Design**

CUSTOMER CONTACT

Notes:
